



Reflections of Desolate Scenery with Mesmerizing Moment, by Proposing Monochromatic Colors in the Form of Contemporary Art

Ilyia Afiat Sayuti, Mohamad Rizal Salleh, Verly Veto Vermol, Farid Raihan Ahmad

College of Creative Arts, Universiti Teknologi MARA, Shah Alam 40450, Malaysia

ilyiaixon@gmail.com, rizalsalleh@uitm.edu.my, erly@uitm.edu.my, farid813@uitm.edu.my
Tel: +60126647034

Abstract

This study attempts to identify and explore Port Dickson's forlorn environment and hypnotic moment. The purpose of the study is to propose monochromatic colors based on the psychological emotions, interpretations, and observations of the researchers. Inspired by the mood, atmosphere, and panoramic sight of Port Dickson to evaluate and offer an appropriate color scheme that conveys the region's mystique while still includes cheerful moments. The significance of monochromatic color will be applied to a painting as a two-dimensional artwork. As fundamental art components, line, color, shape, form, value, space, and texture will be included into the construction of the artwork.

Keywords: Port Dickson, monochromatic color, painting, contemporary art

eISSN: 2398-4287 © 2022.. The Authors. Published for AMER ABRA cE-Bs by e-International Publishing House, Ltd., UK. This is an open access article under the CC BY-NC-ND license (<http://creativecommons.org/licenses/by-nc-nd/4.0/>). Peer-review under responsibility of AMER (Association of Malaysian Environment-Behaviour Researchers), ABRA (Association of Behavioural Researchers on Asians) and cE-Bs (Centre for Environment-Behaviour Studies), Faculty of Architecture, Planning & Surveying, Universiti Teknologi MARA, Malaysia.
DOI: <https://doi.org/10.21834/ebpj.v7iS19.4275>

1.0 Introduction

Port Dickson is a small town with a laid-back lifestyle. It is a tranquil and calm place to live in. On contrary to the serene atmosphere, there are a lot of abandoned areas due to the economy's downfall and the current pandemic situation, which led to the decline number of visitors. Exploring and visiting the abandoned site, by capturing and edited the images in black and white to signifies the color scheme. The connotation of experiencing the daily lives of local people at the beach, and combining both elements of the desolate and mesmerizing moment by introducing monochromatic color to represent the image that includes all aspects of the research process. The usage of monochromatic are inspired by the abandoned scene. As the feelings of looking at the scene are depressing which transpired the researcher in suggesting the color. Stripping the color of the way of what we see from the images which incorporates the tonality, textures, and contrast. To study and experiment range of monochromatic color scheme with single base hue started with black and white.

2.0 Review of Related Literature and Artwork

The abandoned and desolate scene ignites what is the suitable color in developing the artwork. Researching numerous artists in using monochromatic color in their artwork and understand the theory behind the use of color helps the researcher in refining the development of the artwork. As seen the works of International artists such as Pablo Picasso and Paul Sarkisian that represents monochrome does inspire and reflects the idea of the researcher in the area of colouring analysis. In addition of referring local Malaysian artists such as Ajim Juxta and Chang Yoong Chia are essential to the research in order to be influenced by the style of the work that describes the mood, atmosphere and colouring choice purposes.

At first, referring and analysing Pablo Picasso's powerful work titled 'Guernica' which inspired the researcher in the creative process. Guernica titled as a protest against the bombing of Basque village in Northern Spain during the Spanish Civil War, it is a classic of anti-war art. Why did he utilize black and white in the first place? Picasso conveys his sentiments by painting a monochrome color in a visual

eISSN: 2398-4287 © 2022.. The Authors. Published for AMER ABRA cE-Bs by e-International Publishing House, Ltd., UK. This is an open access article under the CC BY-NC-ND license (<http://creativecommons.org/licenses/by-nc-nd/4.0/>). Peer-review under responsibility of AMER (Association of Malaysian Environment-Behaviour Researchers), ABRA (Association of Behavioural Researchers on Asians) and cE-Bs (Centre for Environment-Behaviour Studies), Faculty of Architecture, Planning & Surveying, Universiti Teknologi MARA, Malaysia.
DOI: <https://doi.org/10.21834/ebpj.v7iS19.4275>

cry of grief, according to Jonathan Jones. The incident occurred on April 26, 1937, when the town of Guernica was destroyed by Hitler's Air Force. As a reaction to the present events, he created cubist artwork by experimenting with removing color from a picture and replacing it with a pleasurable cerebral design. (J. Jonathan 2012) In the Guernica artwork, the use of monochrome as a visual language of lines and shadow to convey the deepest impulses and terror as a means of exposing the truth. The use of symbolism subject represents violence, destruction and casualties with multiple perspectives. On the far left a woman holding her deceased child while screaming. A statue of a soldier on below part that were unable to defend the women and child whilst he's body broken into pieces. On the bottom right a woman attempts to flee devastation but her leg rooted to the spot and locked to the stretch of the canvas. The upper corner depicts another victim falling helplessly as flames linger around her. Each of the subject symbolizes the figures are trapped which given the work a sense of claustrophobia. The use of harsh imagery inspired the researcher in depicting the dilapidated scene of Port Dickson in analysing the use of monochromatic color in his visual artwork.

Secondly, Paul Sarkisian, is a Post-War American artist who grew in the contemporary Los Angeles art scene. He was recognized for his photorealism style. Before he developed into the photorealism, he started with an Abstract Expressionist style in the 1950's. In the 60's he ventured into vivid surrealist nudes and moving on to minimalist in the 80's and 90's. During those years he also began to work on a series of Photorealistic paintings. Most of his subjects depicted a full-scale storefront and house facade. Monumental life-sized black and white paintings of building to his portraying deceptive mundane scene. His artwork titled 'Mapleton' represents a facade wooden house which reminiscing the artist had lived in the house for a few months. Rendered in monochrome with volume of grey becomes prominent in the shades. The front position of the house dominates the entire picture which the viewer is confronted with a vast long cabin. Household equipment was placed all over the front narrow porch. From window, main door above and below were cluttered with objects. In order to form a cramped perspective of structure, Paul Sarkisian has captured hundreds of photographs to achieve the degree of reality. As said by the artist "when starting to paint an object, I see the painting as I see the painting process. When it's finished on his terms, a vanishing visual is aspect. It not a painting, it's reality. The painting is done in its disappearance".

In addition on that, multi-talented visual artists from Malaysia, Ajim Juxta creatively manipulated monochrome scheme color into his artwork titled 'Takhta'. The idea of the artwork was derived from a series of monochrome artworks called 'Kanun Gila' means 'Code of Madness'. It is a lyric that he wrote for a band which comprising him and his siblings. Despair and helpless about the way the world now by the conclusion of evidence that transcends the essence of the lyrics. The trajectory we as a civilization are heading on. Monochrome color scheme being executed by Ajim's idea, reflection and of desolation and bleakness. Ajim's prediction to the world what it has become that reflect and speculates about various issues we are facing today. Among the issues were environment, socio-interactive behaviours and technology. 'Kanun Gila' series was named after a song he wrote which is about a bleak landscape and imagined future. The content of Ajim's work prevails the majestic hilly landscapes today were contaminated by waste due to humans irresponsible and greedy behaviour. The series of artwork addresses this issue with an aggressive line that evokes the sense of what remains of megalithic structures that was damaged and destroyed for example harvesting activities through mining. This helpless and despair issues manifest itself through a brooding emotion. "Monochromatic layers represent the concern of environmentalists we have today". (Juxta. A, 2019). As the artist himself foresees mankind will face for tomorrows world.

Another Malaysian talented visual artist Chang Yoong Chia, is the one who manipulated the usage of monochromatic color in his artworks titled 'A Pickup at the Train Station' from a series of 'Flora & Fauna II'. It was made by his recollection of childhood times while spending time in his family garden. The visiting animals in the garden by observing the diversity of life makes it a pleasant place to live and experience. On contrary Chang also mentioned it is a place of misery and death. Especially live animals that will be slaughtered for food. The early part of living in the garden, it felt like a self-contained ecosystem in which dwell within his imagination to be played and create an artwork. Through the years of making the artwork by utilizing different type of materials and media, Chang decided to discard it by searching a way to evoke the sense of mystery and charming moment during his childhood days. This series was started back in 2003 in order to reacquaint himself with past memories, imagination and feeling. On the researcher's viewpoint analysing the artwork, is by relating the content and visualizing the image. The content really does relate to the research that is about invoking an experience of a place we lived in and the contrary of it. Monochrome color was painted in the whole artwork where shades of dark can be discovered on the background. Value of light to dark appears on the subject that evokes the mystery element. Arrangement of the subject composition does show a significant juxtaposition. People, animal and landscapes a subject does reminiscent the connection between human and nature. The visual element of Chang Yoong Chia's work definitely matching the research content and visual aspect.

3.0 Methodology

Referring and analyzing Fred Williams's conceptual framework that has suggested these four factors in art making which includes the concepts of Artist, Artwork, Subject matter, and Audience for deep understanding to develop art appreciation and art practice. The connection of the four concepts is essential and the focus point is "freedom" of exploring the monochrome color palette in the studio practice. Fred Williams ideas inspired the research to connect a unique representation of the surroundings that wanted to show natural environment and landscapes in the visual artwork. These four factors are well connected as the vision of the framework creates a process of interaction and relationship between the artist, artwork and the chosen subject matter to communicate to the Audience. The four concepts can be defined as follows:

i) Artist - as the researcher himself conducting research on the abandoned scene of Port Dickson which reveals the mystery behind the mesmerizing moment relies on discontinued and closed down businesses Identifying and analyzing the chosen colours through personal observation and interpretation prior to the execution of an artwork. Referring to and referencing works by local and Western artists that are relevant to the research, as well as mentioning scholars' perspectives and statements about the research's background and content.

ii) Artwork - Derived from a background of research depicting the issues of abandoned Port Dickson scenes that contrast with the mesmerizing moment that represents the mood and atmosphere. The artwork will be executed in two dimensions, with a variety of acrylic paints serving as the primary medium. Through the analysis chapter of experimenting with various materials and mediums, a suitable technique will be identified. The overall result of the artwork is a semi-abstract style in which the landscape and figurative as a subject are visualized.

iii) Subject Matter - In order to represent the desolate scene and joyful moment, an attempt was made by observing and photographing the current situation, which assisted in identifying the best selected photograph images before transferring it into a series of drawings. Deforming the subjects and reducing the realistic approach in order to achieve the semi abstract style of artwork that was influenced by the works of the referred artists. The use of subjects in the artwork is important because it communicates with the audience or viewers.

iv) Audience - is an important factor when making conclusion from all of the four concepts which the artist is concerned about the viewers who are looking at the artwork. Critics and comments from examiners, supervisors and artists is crucial to the overall outcome of the research. The artist should enable to convey a message to the audience while provides them as much information by making them understanding and appreciating the visual aspects. The outcome of the research that has been transferred into two-dimensional artwork has been achieved through hypothesis, analysis, and findings that reveal a new style of color scheme and technique that other practicing artists can use.

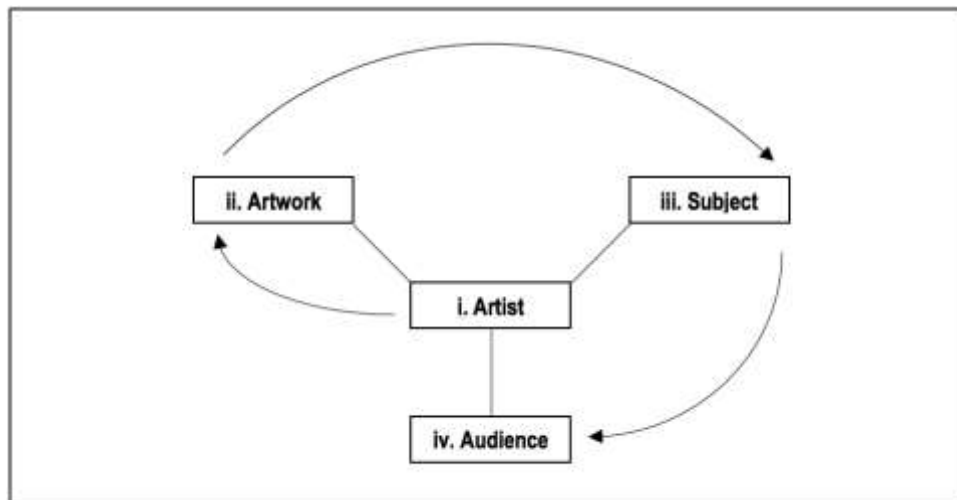


Fig. 1: Fred William's conceptual framework

The connection of four factors in the conceptual framework, as shown in (fig. 1), is critical to the research process's journey. All four factors should be connected and achievable as a result of the research findings. The artwork's final execution allows the viewer to criticize and comment on the visual aspects. The monochrome study, which reflected the researcher's observation and sensitivity to the surroundings, is crucial for capitalizing a new style and color scheme that will benefit other practitioner artists.

4.0 Result and Finding

The study of monochromatic color in a grayscale scheme will help to contribute to the painting's outcome. Observing the abandoned scenery (fig.2: a) was inspired to extract the element of mystery from the old buildings or houses that were made of monochromatic colors and incorporate it into the painting that was suggested. As seen a part of study in monochrome in (fig.2: b) the layer shades of grey evoke more drama, moods, emotions, and feelings when executed in a darker color. "Colors, like features, follow the changes of emotion," Pablo Picasso said. The quote conveys meaning by evoking emotion and inspiring the researcher to choose the colors. The use of colors "creates a dramatic effect or combines them in ways that will stir one's emotion, by showing two different angles with the balanced duality.

Subject matter of local life added in this research as to comply with the research title that is the 'mesmerizing moment'. The subject is used as a way to engage with the viewer. An abstraction of the figure which minimizes the detail but still maintaining the recognizable imagery. An application of natural colored on the subject is to show contrast between the monochrome background. Moving the subject to the front is to create an emphasis in the painting through the use of aesthetic elements of art such as line, shape, perspective, form, texture and space. Although the subject has been stylized into a semi-abstract but the realistic principles are obtained while approaching the canvas as viewing a "window". Important part is maintaining the sense of background, foreground and fixed perspective. An imagery of adding objects to the subject such as goggles is to reflect the use of it in the beach activities. As shown picture above, children and teenagers will be used as a subject because of their happy expression that comes with full energy while enjoying their moment at the beach. Animals such as cat to be included in the artwork, to show the connection of human and animals. As cats is part of human lives which provide love and caring to human emotions. Unexpected twist in the artwork from the combination of both realistic and abstract elements which helped directing the viewer towards more subtle aesthetic. The use of joyful moments and the desolate scene is to create

a new style in an artwork. Portraying the elements of mystery and mesmerizing element are important factors which will underlying a balance and success in the research outcome.

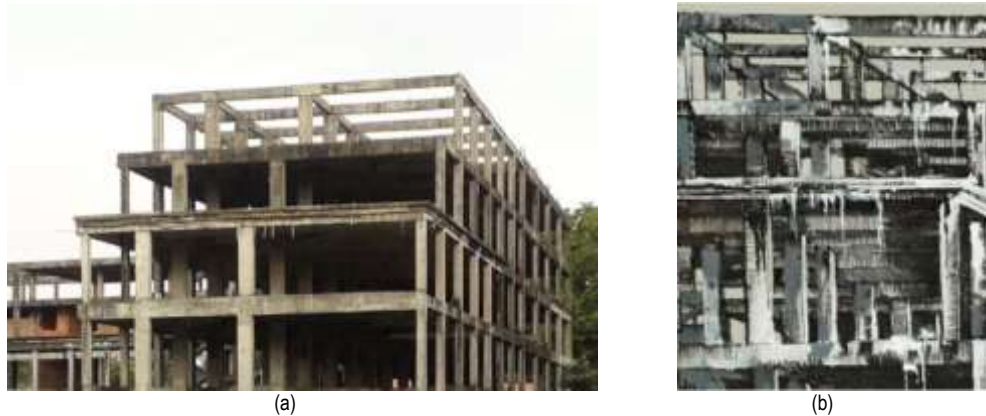


Fig.2: (a) Abandoned structure nearby Teluk Kemang beach, Port Dickson; (b) Layers shade of grey to get the monochromatic effect that shows the mystery of the building surfaces.



Fig.3: Composition of subject matter of local life with abandoned building in monochromatic color

Two-dimensional artwork above (fig.3) was introduced from the all the methodology process. The painting shows its unique elements and color variations, indicating a new approach of implementing the monochromatic color. A newly proposed monochrome color scheme which consists of three colors, blue, purple, and grayscale, that derived from the hypothesis chapter. The intention of using the colors is based on the color theory that will be identified in the meaning in the analysis chapter. As explained in the by Kendra Cherry, 2012, purple symbolizes mystery, imaginary, and spiritual, whereas blue exudes power, confidence, and may also be describe as mystery color due to the darkened hue. The arrangement of composition in this artwork was influenced by the works of Pablo Picasso and Chang Yoong Chia style. The painted moving ocean on the right side provides strength and powerful waves, whilst the purple tree which covered the abandoned building in the background illustrates a mysterious atmosphere and mood. The dilapidated structure of a building in the background shows its dominance through the usage of black and white, prevailing the sense of moody and sorrowful. A ship's steering is depicted in the middle of the scene, with a ship's logo standing to one side of the steering. This painting contains a number of elements and joyful images, and the use of variations in monochrome color gives a significant impact of one's emotion. The visual aspects of the artwork allow the viewer to experience the atmosphere and beach vibe which grasp the sense of gloomy and joy.

5.0 Conclusion

The proposed monochromatic color which reflected the abandoned areas indicates the potential of the color to express the element of mystery. Researching and understanding the history and heritage of Port Dickson is meaningful to the researcher not only just about the importance of the study but to represent the specific location. Components of monochromatic color which consist of Hue, Tint, Tones, and Shades were heavily used in the creative process. Recognizing the history of monochrome painting and analysing the periods and works of the great masters has been beneficial to the research content. The series of painting was proposed and influenced between the modern and contemporary art period which defined by the techniques, visual aspects, and related content. The outcome of the proposed monochrome scheme with a higher volume of grey resulted in more depression and eerie feelings, whilst the addition of limited monochrome variations

produced mysterious effect. Finally, the intention of this study is to provide evidence and practical methodology through the creative process. The result of this process is to introduce the proposed monochromatic color and technique to be used by other art artists would enable them to produce their own style of artwork as it provides opportunities in art and visual communication.

Acknowledgements

The authors would like to thank the College of Creative Arts, Universiti Teknologi MARA (UiTM) Shah Alam, Malaysia, for the funding and support for the writing workshop and ReNeU UiTM, for the publication incentive provided through Program MEE 2.0.

References

- Bell, J. (1999). *What is Painting*. New York.: Thames and Hudson Inc.
- Konemann, v. (2000). *The Story of Philosophy. From antiquity to the present*. Cologne, Germany: Druckhaus Locher GmbH, Cologne.
- Ocvirk, Otto. (1990). *Art Fundamentals*. United States of America.: Wm. C. Brown Publishers.
- Reyner, N. (2010). *Acrylic Innovations*. Georgetown, ON, Canada.: Frasier Direct
- Richardson, T. & Stangos, N. (1974). *Concepts of modern art*. Harmondsworth, England: Penguin Books Ltd
- Zuffi, S. (2012). *Color in Art*. New York.: ABRAMS