

Environmental Awareness and Perceived Responsibility Regarding Generative AI

Saman Rai¹, Khadak Singh Bhandari^{1*}, Ahmed Abdulhakim Al-Absi¹

**Corresponding Author*

¹Smart Computing Department, Kyungdong University Global Campus, Gangwon-do, Goseong, South Korea

Email of All Authors: 2317130@v.kduniv.ac.kr ; mekhadak@kduniv.ac.kr ; absiahmed@kduniv.ac.kr
Tel: +82-10-7361-8335

Abstract

In recent years, Generative AI (GenAI) has become an integral part of student life. The growing use of GenAI demands substantial resources, such as electricity and rare earth metals. This study aims to identify the primary use case for GenAI among undergraduate students at Kyungdong University Global, as well as their awareness of its environmental impact and perceived responsibility. We examined the interconnections between usage frequency, awareness, responsibility attitude, and readiness to reduce AI use. The analysis showed that the students who use GenAI frequently are more aware of its environmental impact but find it hard to stop using it.

Keywords: Generative AI; Sustainable AI; LLMs; AI Environmental Impact

eISSN: 2398-4287 © 2026. The Authors. Published for AMER by e-International Publishing House, Ltd., UK. This is an open access article under the CC BY-NC-ND license (<http://creativecommons.org/licenses/by-nc-nd/4.0/>). Peer-review under responsibility of AMER (Association of Malaysian Environment-Behaviour Researchers). DOI:

1.0 Introduction

Recently, cutting-edge technologies such as Internet of Things (IoT), Artificial Intelligence (AI), and Blockchain have become very popular and are being used in diverse sectors (Zhang et al., 2023). As technology for Generative Artificial Intelligence (GenAI) improves quickly, students use it frequently. It is a functional tool for academic tasks, not merely a chat system (Black & Tomlinson, 2025; Yan et al., 2026). However, when people use GenAI more often, it causes environmental problems. Every request and response from AI involves large digital systems, including data centers, electricity, cooling systems, semiconductor hardware, networks, and user devices. Recent literature indicates that people should not view Generative AI solely as software. It is more accurate to categorize Generative AI as a digital service that alters the environment. Berthelot et al. (2025) state that the total environmental impact arises from multiple sources: training, inference, hosting, networking, and data storage. In addition, the equipment that people use to access the service contributes to this effect. Due to those factors, the impact is broader than the amount of electricity a model directly consumes. These impacts are important because AI relies on energy-intensive computing infrastructure, rare-earth metals, and cooling systems. Public and student awareness levels were observed to be unequal on these impacts. For instance, Dungo et al. (2025) found that students were more aware of GenAI's electricity demand than of its freshwater and rare-metal demands. Similarly, research on Japan and South Korea found that awareness of AI's environmental consequences is socially uneven and linked to factors such as gender, education, and income (Cho et al., 2025).

eISSN: 2398-4287 © 2026. The Authors. Published for AMER by e-International Publishing House, Ltd., UK. This is an open access article under the CC BY-NC-ND license (<http://creativecommons.org/licenses/by-nc-nd/4.0/>). Peer-review under responsibility of AMER (Association of Malaysian Environment-Behaviour Researchers). DOI:

This study focuses on undergraduate students at Kyungdong University Global Campus. The core purpose of this study is to examine students' primary use of GenAI, their awareness of environmental impact, their perceived responsibility, and their readiness to reduce AI use. We identified seven scored categories to better examine the data: Total AI Usage Score, Average AI Usage Score, Number of GenAI Use Categories, General Environmental Concern Score, GenAI Environmental Awareness Score, Responsible AI Attitude Score, and AI Reduction Feasibility Score.

1.1 Objectives

- To explain how often undergraduate students use GenAI and the main reasons why they use it.
- To measure students' general environmental concern, GenAI environmental awareness, responsible AI attitude, and AI reduction feasibility.
- To look for links between GenAI usage, environmental concern, awareness, responsible attitude, and the possibility of reducing AI use.
- To find how scores for GenAI environmental awareness and other metrics differ between academic groups.

1.2 Research Questions

R1 - What is the level of GenAI environmental awareness for undergraduate students at KDU Global Campus?

R2 - How are GenAI usage, general environmental concerns, GenAI environmental awareness, and responsible AI attitude linked to AI reduction feasibility?

R3 - What are the differences based on the department or the academic year in awareness and responsible attitude?

2.0 Literature Review

2.1 Environmental Implications of Generative AI

GenAI requires significant computational power, resulting in substantial energy use and environmental impact. GenAI consumes significant amounts of energy during both training and inference. To assess how GenAI affects the environment is difficult because the structure has many layers - those layers are model development, training, inference, data centers, hosting, networks and user devices. Measuring only electricity consumption and carbon emissions to evaluate GenAI can miss other important aspects, including metals and embodied impacts. Instead, we should assess GenAI as an end-to-end service using life-cycle assessment (Berthelot et al., 2025).

GenAI has hidden environmental costs, such as the use of electricity, the release of carbon dioxide, the use of fresh water to cool data centers, the mining of rare earth metals, and the disposal of electronic waste. Since university students frequently use AI for academic work, these issues are particularly relevant for them. If AI becomes a standard learning tool, universities must broaden their focus from academic integrity to sustainable AI use.

2.2 Student Awareness of GenAI's Environmental Impact

Student awareness of GenAI's environmental impact has not yet fully developed. A survey done on Bulacan State University students showed that students had limited knowledge of GenAI's environmental implications. The students were more aware of electricity use but less aware of water and rare earth metals (Dungo et al., 2025). This is strongly relevant to our present study because the KDU survey measures the same key areas: electricity, water, mining, and e-waste.

2.3 Sustainable AI and Public Responsibility

Sustainable AI research shows asymmetry between "AI for suitability" and "Sustainability of AI". We can use AI to monitor the environment, optimize resource use, and model the climate. However, AI also has its downside. It consumes energy and resources, increasing environmental burden. For responsible research and innovation, as well as for public engagement, people need to know about AI's effects on the environment (Cho et al., 2025). This means in universities, students should not only learn how to use AI tools but also how to use them effectively and responsibly. Universities need to teach responsible AI education that includes environmental impacts and ethical use of AI. In this study, a responsible AI attitude denotes students' personal beliefs that the environmental impact of AI is a serious issue, individuals' accountability for their AI usage, and that universities should educate students, and that other students may consider this issue important.

2.4 Awareness–Action Gap in Sustainable Technology Use

A well-known issue of environmental behavior research is the gap between awareness and action (Colombo et al., 2023; Hochachka, 2024). The difficulty in changing the behavior may arise from convenience, dependency, or lack of alternatives. This paradox is understandable in the students' context, as they use GenAI frequently for academic productivity. Therefore, the present study doesn't assume that high awareness automatically translates into reduced use. We examine the level of awareness and responsible attitude, as well as the frequency of usage and difficulty in reducing usage among students.

3.0 Methodology

3.1 Research Design

We used an exploratory quantitative survey design for this study. We surveyed Students using a Google Forms questionnaire, primarily using a 5-point Likert scale. The goal was to describe students' use of GenAI. Additionally, the study aimed to investigate the relationships among usage, environmental concern, GenAI environmental awareness, responsible AI attitude, and AI reduction feasibility. Our purpose was to identify patterns and relationships in students' responses, rather than to develop a full causal theory. Therefore, the design was appropriate for the study.

3.2 Participants and Data

The study was conducted based on the survey responses from undergraduate students at KDU Global Campus. The final valid sample size was 316 after cleaning the raw survey response data. Firstly, we identified and removed duplicate responses using the student ID. KDU Global Campus has four undergraduate departments – Smart Computing (SC), Artificial Intelligence (AI), International Business Administration (IBA), and International Hotel Management (IHM). Only one student from the IHM department participated in the survey. Thus, we excluded that specific data and the department from our dataset. For simplicity, we grouped students into two academic years: first and second-year students are grouped as Freshmen, while third and fourth-year students are grouped as Seniors.

Furthermore, we categorized all the subjective free-text responses received as "Other". The final demographic breakdown of the sample was as follows: SC students accounted for 53.2%, AI 24.1%, and IBA 22.8%. Freshmen accounted for 61.1%, while seniors comprised 38.9%. Male students accounted for 69.3%, female students 30.1%, and other genders 0.6%. Overall, the most common primary reason for using GenAI, reported by 63.3% of students, was academic work.

3.3 Measures and Scoring

The survey measured five main constructs.

- **GenAI usage:** Students reported how frequently they used GenAI for their primary purpose. The students had four options to choose from: once per week, several times per week, about once per day, and multiple times per day. We scored the responses from 1 to 4, with higher scores indicating more frequent use. The frequency of use for other categories, apart from the primary purpose of GenAI usage, remained blank. While cleaning the response data, we assigned 0 to those blank fields. We calculated the total AI usage score by summing the usage scores across categories. Similarly, we calculated the average AI usage score as the average across non-zero categories. The number of GenAI Use Categories represented the number of categories with a score greater than 0.
- **General environmental concern:** The survey form presented students with options from "Not at all concerned" to "Extremely concerned" to measure their general concern about environmental issues on a 1 - 5 scale.
- **GenAI environmental awareness:** This score measured awareness that GenAI consumes a significant amount of electricity, that it requires substantial amounts of fresh water for cooling, and that GenAI hardware involves mining for rare earth metals and e-waste. Responses were scored from 1 to 5, with higher values indicating greater awareness.
- **Responsible AI attitude:** This score measured whether students agreed with the statements about the seriousness of the environmental impact of GenAI, personal responsibility, the need to educate students at KDU Global, and whether other students considered the environmental impact of GenAI an important issue. We scored responses on a scale of 1 to 5.
- **AI reduction feasibility:** This score measured how easy or difficult students found it to reduce their GenAI use for environmental reasons. The higher score indicated that students found it easy to reduce GenAI usage, whereas the lower score indicated that students found it more difficult to reduce it.

We classified awareness level as low, moderate, or high. We decided to classify scores below 2.5 as low, from 2.5 to 3.5 as moderate, and 3.5 or above as high awareness.

3.4 Reliability

To assess the reliability of composite scales, we used Cronbach's alpha. GenAI environmental awareness had an alpha of 0.761, indicating acceptable reliability. Responsible AI attitude had an alpha of 0.800, indicating good reliability. These results supported our decision to use composite mean scores for the two constructs.

3.5 Data Analysis

We used descriptive statistics, reliability analysis, Spearman correlation, chi-square goodness-of-fit test, and regression analysis for analyzing the data. Since the main variables were based on Likert-type ordinal responses, we selected Spearman correlation. Mann-

Whitney U tests were used for academic year group comparisons. Since there were three departments, to compare them we used the Kruskal-Wallis test. These non-parametric tests were appropriate because the data were ordinal and a normal distribution could not be assumed.

4.0 Findings

4.1 Descriptive Results

Table 1. Descriptive Scores

Variable	Mean	SD	Interpretation
Total AI Usage Score	3.136	1.003	Moderate-to-frequent use
General Environmental Concern Score	3.462	1.122	Moderate concern
GenAI Environmental Awareness Score	3.615	0.895	Moderate-to-high awareness
Responsible AI Attitude Score	3.779	0.689	Generally responsible attitude
AI Reduction Feasibility Score	2.522	0.934	Reducing AI use felt difficult

(Source:) Prepared by the authors

As shown in Table 1, the mean GenAI Environmental Awareness Score was 3.615, indicating students are generally moderate to highly aware. Responsible AI attitude Score was slightly higher at 3.779, indicating students generally feel personal responsibility, agree with the seriousness of the issue, and agree that the university should educate students regarding this topic. In contrast, the AI Reduction Feasibility Score is low, only 2.522, indicating that they did not find it easy to reduce their GenAI usage for environmental reasons.

Table 2. GenAI Environmental Awareness

Awareness Level	Count	proportion	GenAI Environmental Awareness Score (AAS)
High awareness	181	57.28 %	>3.5
Moderate awareness	104	32.91 %	>2.5
Low awareness	31	9.81 %	<2.5

(Source:) Prepared by the authors

In Table 2, the awareness classification showed that 181 students (57.28%) fell into the high awareness group. Furthermore, 104 students (32.91%) were in the moderate awareness group, and 31 students (9.81%) fell into the low awareness group.

4.2 Correlation Results

The Spearman correlation analysis indicated several significant associations, as illustrated in Table 3. The strongest association was observed between General environmental concern and Responsible AI attitude. This explains that students who are generally concerned about the environment are more likely to hold a responsible AI attitude. Moreover, GenAI environmental awareness and Responsible AI attitude show a positive association, indicating awareness is a major factor in a responsible attitude. Nevertheless, a negative association was observed between total AI usage and AI reduction feasibility, which led us to a major insight. The more frequently students used AI, the more difficulty they found in reducing AI usage. This reveals the coexistence of awareness and dependence.

Table 3. Spearman correlation

Relationship	Spearman ρ	p-value	Interpretation
Total AI usage → GenAI environmental awareness	0.202	0.0003	Higher usage associated with higher awareness
Total AI usage → Responsible AI attitude	0.126	0.0249	Higher usage weakly associated with stronger responsible attitude
Total AI usage → AI reduction feasibility	-0.148	0.0084	Higher usage associated with greater difficulty reducing use
General environmental concern → GenAI environmental awareness	0.174	0.0019	General concern associated with AI-specific awareness
General environmental concern → Responsible AI attitude	0.338	<0.001	General concern associated with responsible attitude
GenAI environmental awareness → Responsible AI attitude	0.301	<0.001	Awareness associated with responsible attitude

(Source:) Prepared by the authors

4.3 Department and Academic Group Comparison Results

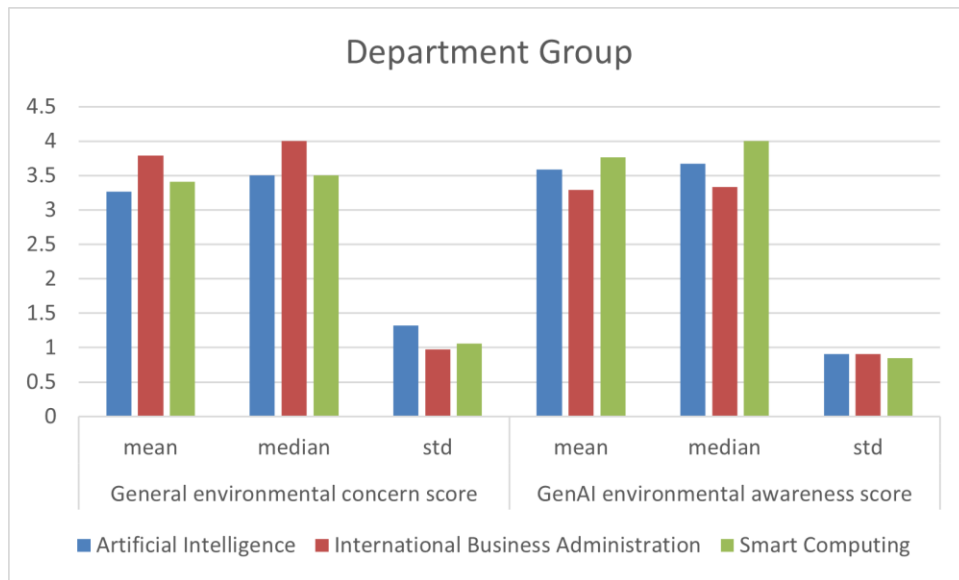


Fig. 1: Comparison of general environmental vs GenAI environmental concern among departments.

(Source:) Prepared by the authors

The result from the Kruskal-Wallis test showed a statistically significant difference in general environmental concern between departments ($p = 0.0194$). Similarly, a significant difference was also found for GenAI environmental awareness ($p = 0.0004$). Fig. 1 illustrates that the IBA students showed the greatest general environmental concern, while SC students showed the highest AI-specific awareness. This may be because computing-related students are more exposed to AI technology and infrastructure. The chi-square test further supports this result ($\chi^2 = 16.537$, $p = 0.0024$).

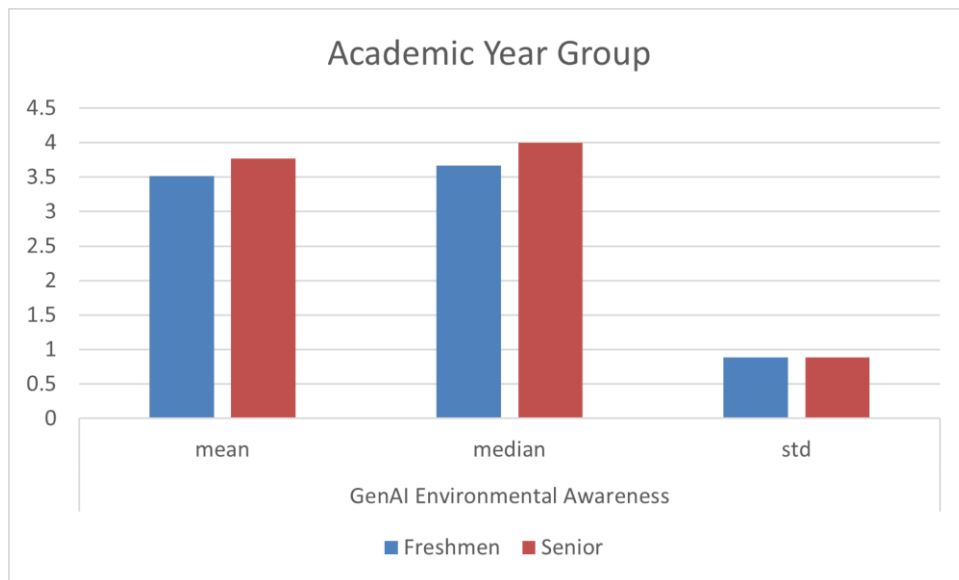


Fig. 2: GenAI Environmental awareness among students from different academic year groups.

(Source:) Prepared by the authors

For the academic year, we used the Mann-Whitney U test. It showed a statistically significant difference in GenAI environmental awareness ($p = 0.0113$), as shown in Fig. 2. The senior students showed higher awareness than the freshmen. However, the academic year did not significantly affect total AI usage, general environmental concern, responsible AI attitude, or AI reduction feasibility. The chi-square test also showed that academic year was not significantly associated with categorical awareness ($\chi^2 = 2.762$, $p = 0.2513$).

4.4 Regression Results

We employed two Ordinary Least Squares (OLS) regression analysis models. The first model takes GenAI environmental awareness as the dependent variable. The model was statistically significant with $F = 8.162$, $p < 0.001$, and $R^2 = 0.156$, as depicted in Fig. 3. We identified total AI usage, General environmental concern, and gender as significant predictors. Higher AI usage and greater general

environmental concerns were associated with higher GenAI environmental awareness. Additionally, male students showed higher awareness. However, with a low R² value, the model explained only 15.6% variation in awareness. This suggests other unknown factors, such as coursework, technical interest, media exposure, etc., may also matter.

```

Regression sample size: 316
                                OLS Regression Results
=====
Dep. Variable:    Q('GenAI environmental awareness score')  R-squared:                0.156
Model:           OLS                                       Adj. R-squared:           0.137
Method:          Least Squares                             F-statistic:              8.162
Date:            Sat, 02 May 2026                          Prob (F-statistic):      4.01e-09
Time:            17:03:30                                   Log-Likelihood:          -385.98
No. Observations: 316                                     AIC:                     788.0
Df Residuals:    308                                     BIC:                     818.0
Df Model:        7
Covariance Type: nonrobust
=====
                                coef    std err          t      P>|t|      [0.025    0.975]
-----+-----
Intercept                2.3813    0.229     10.381    0.000     1.930     2.833
C(Q('Gender_clean'))[T.Male]  0.3888    0.105     3.711    0.000     0.183     0.595
C(Q('Gender_clean'))[T.Other] -0.2140    0.598    -0.358    0.721    -1.391     0.963
C(Q('Department'))[T.International Business Administration] -0.2548    0.144    -1.767    0.078    -0.539     0.029
C(Q('Department'))[T.Smart Computing]  0.1194    0.136     0.880    0.379    -0.147     0.386
C(Q('Year_group'))[T.Senior]  0.1208    0.115     1.054    0.293    -0.105     0.346
Q('Total AI usage score')      0.1386    0.048     2.912    0.004     0.045     0.232
Q('General environmental concern score') 0.1382    0.043     3.221    0.001     0.054     0.223
=====
Omnibus:             9.931   Durbin-Watson:         2.065
Prob(Omnibus):       0.007   Jarque-Bera (JB):      10.015
Skew:                -0.395   Prob(JB):              0.00669
Kurtosis:            3.369   Cond. No.              64.0
=====
    
```

Fig. 3: OLS regression results when the dependent variable is set to the GenAI environmental awareness score

(Source:) Created by the authors

The second model takes the Responsible AI attitude as the dependent variable. The model was statistically significant with F = 12.51, p < 0.001, and R² = 0.246, as depicted in Fig. 4. We identified GenAI environmental awareness, General environmental concern, and year group as significant predictors. At the same time, Total AI usage was statistically not significant. These findings indicate that a responsible AI attitude is more strongly connected with awareness and concern than frequency of use.

```

Regression sample size: 316
                                OLS Regression Results
=====
Dep. Variable:    Q('Responsible AI attitude score')  R-squared:                0.246
Model:           OLS                                       Adj. R-squared:           0.226
Method:          Least Squares                             F-statistic:              12.51
Date:            Sat, 02 May 2026                          Prob (F-statistic):      1.51e-15
Time:            17:26:16                                   Log-Likelihood:          -285.58
No. Observations: 316                                     AIC:                     589.2
Df Residuals:    307                                     BIC:                     623.0
Df Model:        8
Covariance Type: nonrobust
=====
                                coef    std err          t      P>|t|      [0.025    0.975]
-----+-----
Intercept                2.3213    0.194    11.948    0.000     1.939     2.704
C(Q('Gender_clean'))[T.Male]  0.0067    0.078     0.086    0.931    -0.147     0.160
C(Q('Gender_clean'))[T.Other] -0.5537    0.436    -1.269    0.205    -1.412     0.305
C(Q('Department'))[T.International Business Administration] -0.0612    0.106    -0.579    0.563    -0.269     0.147
C(Q('Department'))[T.Smart Computing] -0.0539    0.099    -0.544    0.587    -0.249     0.141
C(Q('Year_group'))[T.Senior]  -0.1964    0.084    -2.347    0.020    -0.361    -0.032
Q('GenAI environmental awareness score')  0.2113    0.042     5.086    0.000     0.130     0.293
Q('Total AI usage score')      0.0302    0.035     0.860    0.391    -0.039     0.099
Q('General environmental concern score')  0.2072    0.032     6.518    0.000     0.145     0.270
=====
Omnibus:             10.515   Durbin-Watson:         1.766
Prob(Omnibus):       0.005   Jarque-Bera (JB):      14.012
Skew:                -0.274   Prob(JB):              0.000906
Kurtosis:            3.874   Cond. No.              79.1
=====
    
```

Fig. 4: OLS regression results when the dependent variable is set to the Responsible AI attitude score

(Source:) Created by the authors

5.0 Discussion

5.1 Moderate-to-High Awareness among KDU students

The first major finding of this study is that KDU Global students showed moderate-to-high levels of awareness of GenAI's environmental impact. This finding differs from some previous student awareness research, where students showed limited awareness of GenAI's environmental implications, especially freshwater and rare metals (Dungo et al., 2025). One of the factors contributing to this difference can be the composition of the KDU Global students' sample. Most of the sample consisted of students from the SC and AI departments. Naturally, they have more knowledge about technologies and their impacts due to their field of study. Even so, we shouldn't make too much of the finding. Even though people were very aware, the regression model only showed a small change in awareness. The regression analysis indicates that awareness is influenced by factors not included in the survey, such as prior coursework, personal interest, media exposure, or environmental education.

5.2 The Awareness-Action Gap

The most important finding is the gap between awareness and action. Students were moderately to highly aware and held a responsible attitude, but the feasibility of AI reduction was low. They recognize the environmental impacts of GenAI; however, they find it difficult to reduce their use of it. Investigative research conducted at the University of Glasgow with AI water footprint digital posters demonstrated a similar result: only a small number of respondents expressed a strong intention to change their actual usage habits, even though awareness was moderately high (Gibbons et al., 2025). Frequent users were more aware of the environmental impact of GenAI but found it hard to stop using it, indicating that awareness alone is insufficient, and students require alternative solutions. This is understandable because students use AI not only for leisure but also for their academic work, coding, research, and learning. Hence, telling students to "use AI less" is ineffective. A better approach would be to show them how to use AI effectively, purposefully, and responsibly.

5.3 General Environment Concern and AI-Specific Awareness

The result showed that general environmental concern is associated with both GenAI environmental awareness and responsible AI attitude. However, department-wise differences suggest that having general concern does not necessarily translate to AI-specific awareness. IBA students showed great general concern, but low AI-specific awareness compared to computing departments. This suggests that students may care about environmental issues but not understand the specific environmental cost of AI. This distinction can help us in curriculum design as AI literacy plays a significant role in influencing university students' attitudes toward GenAI (Wang et al., 2024). Universities should introduce digital literacy courses that teach students about sustainability and the environmental consequences of AI. Universities should not assume that environmentally concerned students automatically understand AI environment footprints.

5.4 Responsible AI Attitude is More Than Usage Frequency

Total AI usage showed a positive correlation with responsible AI attitude. This finding aligns with a previous research study that concluded that less frequent users of GenAI demonstrate a greater tendency to adopt environmentally responsible practices (Balakrishnan et al., 2025). However, regression showed usage was not a significant predictor of responsible attitude. On the other hand, a responsible AI attitude was strongly associated with awareness and general environmental concern. This suggests that responsibility arises from awareness and general concern rather than frequent use of AI.

5.5 Department and Year Differences

The findings suggest that technical students are more aware of AI-specific environmental effects, whereas non-technical students are more concerned about general environmental issues. This creates an opportunity for interdisciplinary education. Technical students can benefit from strong environmental ethics, and business students can benefit from a technical explanation of AI resource consumption. Students in their senior year had higher awareness than freshmen. This can stem from greater academic exposure, more frequent use, and a deeper understanding of the underlying technology. Although the academic year affected awareness, it had no significant effect on responsible attitude and the feasibility of reduction. This further solidifies the need for the incorporation of sustainable AI education in the curriculum. Since the existing curriculum rarely explains the environmental consequences of AI in depth (Dungo et al., 2025).

5.6 Limitations and Future Research

The limitations of this study are: First, it was based on only one university, so generalizing the findings may be difficult. Second, the self-reported and cross-sectional data were not effective for causal relationships. Third, students were allowed to choose only one primary use, which limited the usefulness of the Number of GenAI Use Categories variable. In the future, we will use larger and more diverse samples across multiple universities, rely on longitudinal studies for establishing causal relationships, and allow students to choose multiple use categories.

6.0 Conclusion& Recommendations

The study investigated environmental awareness and perceived responsibility regarding GenAI among undergraduate students at KDU Global Campus. Students showed generally moderate to high awareness and a responsible AI attitude. However, we found that students had difficulty reducing AI usage for environmental reasons. Total AI usage had a positive association with GenAI environmental awareness and responsible attitude, and a negative association with AI usage reduction feasibility. Regression suggested that general environmental concern and GenAI environmental awareness were important predictors for responsible AI attitude.

In conclusion, awareness is necessary but not sufficient. Students mostly understand the impacts of GenAI in environments, but they are dependent on it for academic productivity. By observing this gap, universities should not only inform students about those problems but also create programs that teach students practical AI sustainability education.

Acknowledgements

The authors thank all participants from different Departments at Kyungdong University Global for their participation in the survey and for the resources used in this study.

Paper Contribution to Related Field of Study

This paper provides real survey data from undergraduate students at KDU Global South Korea. It establishes a connection between GenAI use, environmental awareness, a responsible attitude, and the difficulty of reducing AI use. Universities can use the findings from this paper to design AI sustainable education and responsible AI guidelines.

References

- Balakrishnan, S., Chittineni, J., Maheswari, P., & Sahila, C. (2025). Generative Artificial Intelligence and Green Choices: Exploring environmental attitudes and digital behaviour in India. *Journal of Research Innovation and Technologies (JoRIT)*, 4(16), 159. [https://doi.org/10.57017/jorit.v4.2\(8\).03](https://doi.org/10.57017/jorit.v4.2(8).03)
- Berthelot, A., Caron, E., Jay, M., & Lefèvre, L. (2025). Understanding the environmental impact of generative AI services. *Communications of the ACM*, 68(7), 46–53. <https://doi.org/10.1145/3725984>
- Black, R. W., & Tomlinson, B. (2025). University students describe how they adopt AI for writing and research in a general education course. *Scientific Reports*, 15(1), 8799. <https://doi.org/10.1038/s41598-025-92937-2>
- Cho, Y., Wang, S., Kinoshita, S., Ikkatai, Y., & Yokoyama, H. M. (2025). Linking public awareness to RRI pathways for sustainable AI: a survey from Japan and South Korea. *AI And Ethics*, 5(6), 6139–6150. <https://doi.org/10.1007/s43681-025-00822-5>
- Colombo, S. L., Chiarella, S. G., Lefrançois, C., Fradin, J., Raffone, A., & Simone, L. (2023). Why Knowing about Climate Change Is Not Enough to Change: A Perspective Paper on the Factors Explaining the Environmental Knowledge-Action Gap. *Sustainability*, 15(20), 14859. <https://doi.org/10.3390/su152014859>
- Dungo, C. a. B., Beltran, Z. L. E., Declaro, B. C., Dela-Cruz, J. J. C., & Viray, R. U. (2025). Students' level of awareness on the environmental implications of generative AI. *Journal of Education in Science Environment and Health*, 11(2), 93–107. <https://doi.org/10.55549/jeseh.777>
- Gibbons, S., Watts, C., White, S., & Bach, L. (2025). Investigating awareness and behavioural intentions from AI water footprint digital posters in higher education settings. *Sustainable Futures*, 10, 101533. <https://doi.org/10.1016/j.sfr.2025.101533>
- Hochachka, G. (2024). When concern is not enough: Overcoming the climate awareness-action gap. *AMBIO*, 53(8), 1182–1202. <https://doi.org/10.1007/s13280-024-01999-5>
- Wang, C., Wang, H., Li, Y., Dai, J., Gu, X., & Yu, T. (2024). Factors influencing university students' behavioral intention to use generative artificial intelligence: integrating the theory of planned behavior and AI literacy. *International Journal of Human-Computer Interaction*, 41(11), 6649–6671. <https://doi.org/10.1080/10447318.2024.2383033>
- Yan, G., Zhu, C., Li, T., Yip, J., & Ni, J. (2026). Assessing the impact of generative AI on undergraduate thesis quality: A comparative study of students and teachers. *PLoS ONE*, 21(4), e0347653. <https://doi.org/10.1371/journal.pone.0347653>
- Zhang, K., Bhandari, K. S., & Cho, G. (2023). TB-RPL: A try-the-best fused mode of operation to enhance point-to-point communication performance in RPL. *Electronics*, 12(7), 1639.

Note: Online license transfer

All authors are required to complete the E-B Proceedings exclusive license transfer agreement before the article can be published. This transfer agreement enables e-IPH, Ltd., UK to protect the copyrighted material for the authors, but does not relinquish the authors' proprietary rights. The copyright transfer covers the exclusive rights to reproduce and distribute the article, including reprints, photographic reproductions, microfilm or any other reproductions of similar nature and translations. Authors are responsible for obtaining from the copyright holder, the permission to reproduce any figures for which copyright exists.